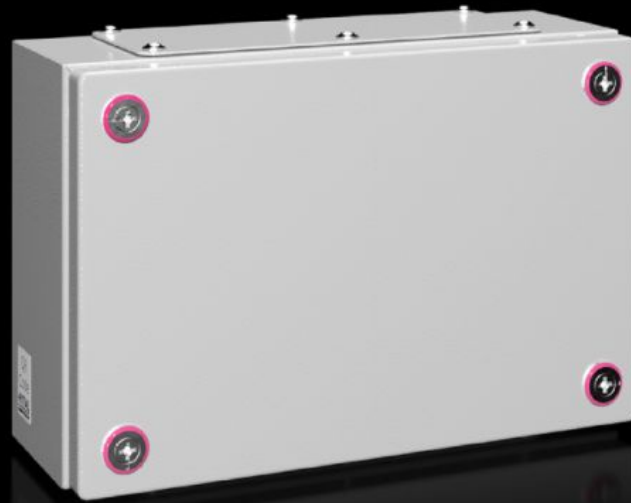


# Rittal – The System.

Faster – better – everywhere.



## KX 1531.000 KX small housing

State: 9/16/2022 (Source: [rittal.com/us-en](http://rittal.com/us-en))

ENCLOSURES

POWER DISTRIBUTION

CLIMATE CONTROL

IT INFRASTRUCTURE

SOFTWARE & SERVICES

FRIEDHELM LOH GROUP



# KX 1531.000 - KX small housing KX terminal box, sheet steel with flange

The small enclosure KX, terminal box KX, with a gland plate allows for flexible interior installation and simple cable entry with optimum use of space.

## Features

Model No.	KX 1531.000
Material	Housing: Carbon steel Cover: Carbon steel, all-round foamed-in PU seal
Surface finish	Housing and cover: Dipcoat primed, powder-coated on the outside, textured paint
Color	RAL 7035
Supply includes	Housing with cover Mini-fasteners Carbon steel flange plates with seals and assembly components
Protection category NEMA	NEMA 1, 12
Protection category IP to EN 60529	IP 55
Type rating according to UL 50E	Type 1, 12
IK code	IK08
Dimensions	Width: 300 mm Height: 200 mm Depth: 120 mm Width: 11.8 " Height: 7.87 " Depth: 4.72 "
Material thickness - cover	1.25 mm 0.05 "
Material thickness - enclosure	1.25 mm 0.05 "
Flange Plates	: 1 + 1

# Features

---

Base material	Carbon steel
Packaging unit	1 pc(s).
Weight/packaging unit	3.12 kg 6.9 lb.
Copper weight (kg per piece)	0
Customs tariff number	84879090
EAN	4028177816374
ETIM 7.0	EC000261
ECLASS 8.0	27180101

# Approvals

---

Approvals	Bureau Veritas DNV-GL GOST Lloyds Register of Shipping UL + C-UL (listed)
Certificates	Protection category
Explanations	Declaration of conformity Declaration of conformity UK